

ApeosPort  
C4430

**FUJI XEROX** 

# ApeosPort-IV C4430

## Digital Colour Multifunction Device

Full-featured power in a space-saving compact design



# ApeosPort-IV C4430 Multifunction Device

**Unleash the productivity of your office.** We've taken the office-critical features of our workgroup MFDs and packed them into this ultra productive A4-sized multifunction device. It seamlessly integrates print, scan, copy and fax functionality and adds smart management tools to simplify work for busy offices with high-volume colour requirements.

The ApeosPort-IV C4430 features an open architecture technology that enables personalised and customised document management solutions you can access right from the device's touchscreen. These applications can leverage your existing infrastructure and databases, and meet your specific business challenges.

## Features at a glance

- Print, copy, scan with optional faxing
- High speed 45 ppm output in both colour and black and white
- Intuitive, easy-to-use colour user interface
- Sophisticated document scanning, security and management tools



3 USB memory slot



2 One touch buttons

1 Stylus Pen



# Choose desktop or floor standing models to locate conveniently close to users

Choose the configuration that meets your needs with desktop models holding up to 1,250 sheets or floor standing models holding up to 2,350 sheets.

- Standard 550 sheet paper tray
- Total 700 sheet capacity
- One tray option 550 sheets
- Total 1,250 sheet capacity
- Two tray option 1,100 sheets
- Total 1,800 sheet capacity
- One tray and two tray options 1,650 sheets
- Total 2,350 sheet capacity
- Stapler Finisher
- Automatic stacking, sorting and stapling

Sheet capacity based on 80 gsm

Log In / Out    Job Status    Machine Status    Energy Saver

4 Repositioned service buttons

5 New design colour user interface

6 Status indicators on edge

Language  
Screen Brightness  
Setup  
Calibration  
Activity Report  
Fax Receiving Mode  
Print Mode

1 2 3  
GHI JKL MNO  
4 5 6  
PQRS TUV WXYZ  
7 8 9  
\* 0 #  
Dial Pause Speed Dial  
- C >>>

Clear All  
Interrupt  
Stop  
Start

Data Error Main

# Your processes simplified

**Full-function scanning with embedded OCR\*** includes a wide range of document scanning and routing capabilities. Create searchable PDF files at the devices for easy archiving, distribution, search and sharing. Creating a text searchable file is as simple as choosing a file format and selecting the destination.

\*Black and white documents only. Optional - Searchable PDF Kit is required.



**With LDAP integration standard.** Secure authentication, administration and access to your corporate directory is simplified.

**Quickly scan files to or print directly from any standard USB memory drive** through the USB port that is conveniently located on the device user interface\*.

\* Optional Scan to USB Kit and/or USB Media Print Kit is required.

**Automate everyday workflows.** Create job flow sheets to automatically route documents to predefined locations, including email addresses, fax destinations and FTP/SMB sites.

**High-capacity paper trays.** Up to 2,350 sheets mean fewer trips to load paper, especially during long print jobs.

**Thumbnail display makes retrieval easier.** Documents stored on the hard drive are displayed as thumbnails and up-close previews on the device touchscreen.

**Concurrently scan, print, copy, fax and route files** to their destination. The Fuji Xerox multitasking network controller handles multiple office tasks with speed and efficiency, maximising your productivity.

**Integrates easily** with 3rd-party workflow applications to extend and fine-tune capabilities such as accounting and document management.

**Convenient walk-up operation.** Easy to use and navigate, the 7-inch colour touchscreen guides you through even the most complex operations.

**The efficient finisher** staples your documents or offset stacks jobs for grab-and-go convenience.

**To speed up copying and faxing** an express (simple) copy and fax feature is available that displays only the basic settings. This is provided in addition to the normal features.



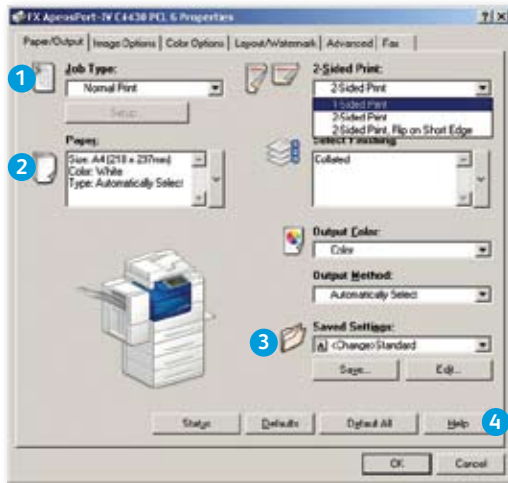
**Reduce costs by printing multiple pages per sheet (N-Up)** which is especially useful when printing Microsoft PowerPoint presentations, MS Word documents, PDFs — and even web pages.

**Electronic fax.** If there is a concern about faxes getting lost in piles of other documents, this feature eliminates paper wastage and provides peace of mind. It will route incoming faxes to a nominated email address, folder or network connected PC for retrieval and further distribution on demand.

**Incoming faxes reported by e-mail.** For a paperless fax option, fax jobs can be reported to five pre-registered users when the document is stored in the mailbox.

**WHQL certified PCL and PostScript print drivers** provide a consistent, easy-to-use interface for end-users that can greatly simplify your printing operations.

\* WHQL certified drivers will be available from April 2011.



- 1 Drop down menu for secure print, fax, save to mailbox and more
- 2 Paper selection summary window
- 3 Favourite print settings
- 4 Help function for feature descriptions and driver assistance

**Customise your print driver settings** for economy and efficiency. For example, set two-sided printing or choose N-up for printing multiple pages on a single sheet as your default.

**Save time by storing the settings** of frequently printed documents as favourites in your print driver. Settings include paper sizes, covers, duplexing, finishing and more.

## Security built in

In today's business environment, data security is critical. The technology you deploy into your organisation must have a complete set of capabilities to help safeguard your confidential information.

The ApeosPort-IV C4430 multifunction device delivers security features that help safeguard confidential information at all points of document vulnerability.

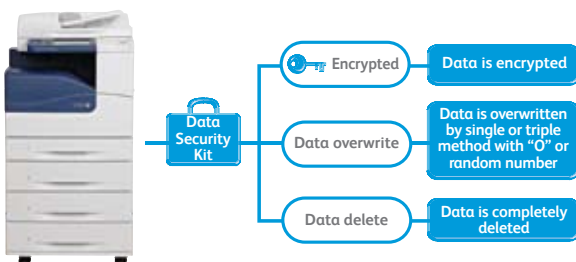
### Document

**Secure print** helps keep documents private by holding print jobs in the queue until the user enters the password.

**Password protected PDFs** require a password to open and view a sensitive scan.

### Hard Drive

**Data Security Kit** provides the following security features:



### Device

**Network Authentication** restricts access to device features and management settings by validating user names and passwords.

### Network

**IEEE 802.1X protocol** helps ensure devices connected to the network are properly authenticated.



**IPv6 support** opens up additional IP addressing opportunities across the Internet and inside enterprise firewalls. IPv6 provides additional network security, better network routing and configuration, and improved support for high volume printing and larger print jobs.

# Easily manage Fuji Xerox devices

**Proactively manage printing fleets** and control colour usage and costs with Fuji Xerox management tools.

**CentreWare™ Internet Services.** Software that makes it easy for administrators to configure the device, upload address books, monitor usage and consumables remotely and establish auditing capabilities.



**Manage colour printing to minimise costs.** Control costs by nominating when colour could be used and by whom. This ensures that colour is available to those individuals who truly leverage its power - such as the sales teams and marketing department.

**Driverless printing.** For remote users with CentreWare Internet Services web utility. Any connected computer can immediately output PDF, TIFF and PRN files from any network computer, without using a print driver at all.

**Device Setup Tool.** Allows for simplified device configuration and administration, and lets you easily clone configurations to other similar devices on the network.

## Fuji Xerox Accounting Solutions

Available as standard features on Fuji Xerox multifunction devices. Use them to monitor not only the document pages your office produces but also who produced them. Once you know where your costs are coming from, you can take control of them.

**Auditron.** Sets limits of device features for analysis and billing purposes.

**Xerox Standard Accounting.** Provides reports for greater cost control to track and limit the number of copy, print, network scanning, email and fax jobs for each user.

**Network Accounting.** Ideal for larger enterprises. Provides extensive accounting information level for copies, prints and scans using integrated solutions available from Fuji Xerox.

### Key Features

- Set a quota on the number of print, copy, scan and fax jobs that a user can perform. Quotas can be reset remotely at any time
- Account for device activity down to the user, group or departmental level
- Manage a user's access to colour for both copy and print jobs
- Bill usage to internal departments or external clients

# Extending your capabilities with Apeos Solutions

The transfer of knowledge, data and communication of information is critical to the efficiency and productivity of business today. The office employee also demands true 'ease of use' to ensure this knowledge is distributed efficiently and securely within the business.

**Image Gateway for Apeos** is the platform delivering integrated office solutions and provides additional capability to enhance your Enterprise productivity, security, streamline processes and reduce costs. Capabilities include: Cost Recovery, Secure Device Authentication via Card ID, Scanning directly into Enterprise Content Management Systems, Rules & Routing, Secure Fax and Workflow.

## Cost Recovery – ACCRU

- Secure Release via Card ID/PIN and Cost Recovery of all Print, Copy, Scan and Fax jobs
- Disburse and control print related costs to users / departments and cost centres
- Enterprise level reporting
- Active Directory authentication and SSL Encryption to ensure security

## Scan to and print from EDMS

- Tight integration to supported ECM systems with search capabilities providing process improvements and security
- Consolidation of document storage and retrieval
- Collaboration, create, share and review content
- Streamline resource intensive processes with the ability to preview and retrieve documents via the user interface

## Image and data capture

- Support for batch scanning (including blank page recognition)
- Extended output file formats and destinations such as Word, Excel and high compression PDF
- Minimise information leakage through MyFolder and MyEmail

## Fax communication

- Access the internal fax server module of or connect to the external RightFax server (including support for FoIP)
- Desktop faxing capability
- Follow me faxing (available with ACCRU)



## Specifications of ApeosPort-IV C4430 Series

### Copy Function

Type	Desktop / Console Type
Memory	2 GB
HDD	80 GB (Used Space: 40 GB)
Scanning Resolution	600 x 600 dpi
Warm-up Time	35 sec or less (at 20°C room temperature) 26 sec or less (After exiting low power mode: at 20°C room temperature)
Original Paper Size	<b>Platen:</b> Max 216 x 356 mm A4/Legal size 8.5 x 14" for sheets and books <b>DADF:</b> Max 216 x 356 mm, Min 125 x 85 mm (Simplex) / 125 x 110 mm (Duplex)
Output Paper Size	<b>Max:</b> Paper Trays 1 - 4: A4, Legal 8.5 x 14" (216 x 356 mm) Paper Tray 5 (For Bypass Tray): Legal 8.5 x 14" (216 x 356 mm) <b>Min:</b> Paper Trays 1 - 4: A6, Monarch 3.875 x 7.5" (98 x 190 mm) Paper Tray 5 (For Bypass Tray): Envelope (76 x 127 mm), Monarch 3.875 x 7.5" (98 x 190 mm), Postcard 3.5 x 5" (88.9 x 127 mm)
Output Paper Weight <sup>1</sup>	<b>Tray 1 - 4:</b> 60 - 216 gsm <b>Tray 5 (Bypass Tray):</b> 60 - 216 gsm
First Copy Output Time	<b>Platen:</b> BW 5 sec, Colour 7 sec <b>DADF:</b> BW 7 sec, Colour: 9 sec
Continuous Copy Speed	<b>Simplex:</b> BW: 45 ppm, Colour: 45 ppm <b>Duplex:</b> BW: 36 ppm, Colour: 36 ppm
Paper Tray Capacity	<b>Standard:</b> 700 sheets: 550 sheets (Paper Tray) + 150 sheets (Bypass Tray) <b>Optional:</b> One Tray Module: 550 sheets, Two Tray Module: 1,100 sheets <b>Maximum:</b> 2,350 sheets: 550 sheets (Paper Tray) + 550 Sheets (One Tray Module) + 1,100 sheets (Two Tray Module) + 150 sheets (Bypass Tray)
Output Tray Capacity	500 sheets (at 80 gsm)
Power Supply	AC 220 - 240 V, 8 A, 50 / 60 Hz
Power Consumption	<b>Max:</b> 1,617 W <b>Sleep Mode:</b> 15 W <b>Standby Mode:</b> 160 W
Dimensions	W 560 x D 536 x H 630mm (With Automatic Document Feeder)
Machine weight	56 kg (Mainframe + Automatic Document Feeder)

<sup>1</sup> Performance may vary for heavyweight, coated and special stocks

### Print Function

Type	Built-in Type
Continuous Print Speed	<b>Simplex:</b> BW: 45 ppm, Colour: 45 ppm <b>Duplex:</b> BW: 36 ppm, Colour: 36 ppm
Print Resolution	600 x 600 dpi, 1,200 x 1,200 dpi
PDL	PCL6, PCL5, Optional: Adobe® PostScript® 3™
Operating System	<b>PCL:</b> Windows® 2000, Windows® XP, Windows® XP x64, Windows Server® 2003, Windows Server® 2003 x64, Windows Server® 2008, Windows Server® 2008 x64, Windows Server® 2008 R2, Windows Vista®, Windows Vista® x64, Windows® 7, Windows® 7 x64, Mac OS X 10.5/10.6 <b>Adobe®PostScript®3™</b> Windows® 2000, Windows® XP, Windows® XP x64, Windows Server® 2003, Windows Server® 2003 x64, Windows Server® 2008, Windows Server® 2008 x64, Windows Server® 2008 R2, Windows Vista®, Windows Vista® x64, Windows® 7, Windows® 7 x64, Mac OS 9.2.2, Mac OS X 10.3.9-10.4.11 (except 10.4.7), Mac OS X 10.5/10.6
Connectivity	Ethernet 10BASE-T / 100BASE-TX / 1000BASE-T, USB 2.0

Descriptions in this material, product specifications and / or appearances are subject to change without prior notice due to improvements. Please note that the product colour appears differently from the actual colour as a result of properties of papers or printing ink. Windows and Windows NT are registered trademarks of Microsoft Corporation. NetWare is a registered trademark of Novell, Inc. in the United States. Macintosh, Mac OS and Ether Talk are trademarks of Apple Computer, Inc. PostScript is a registered trademark of Adobe Systems Incorporated in each country. HP-GL is a registered trademark of Hewlett-Packard Company. Other company names or product names are registered trademarks or trademarks of each company.

Spares for the standard configuration of installed machines is supported for up to 7 years from the date of the end of machine production.

### Scan Function

Type	Colour Scanner
Scanning Speed	<b>BW:</b> 45 sheets/min, <b>Colour:</b> 45 sheets/min
Scanning Resolution	600 x 600 dpi, 400 x 400 dpi, 300 x 300 dpi, 200 x 200 dpi
Connectivity	Ethernet 10BASE-T / 100BASE-TX / 1000BASE-T
Scan Destinations	Scan to Folder, Scan to PC, Scan to Email, Scan to Home

### Fax Function (Optional)

Send Document Size	Max: A4/Legal 8.5 x 14" (216 x 356 mm)
Transmission Time	Less than 3 seconds
Transmission Mode	ITU-T G3
No. of Fax Lines	Maximum: 1 port

### Duplex Automatic Document Feeder

Paper Capacity	110 sheets
Original Paper Size	<b>Max:</b> 216 x 356 mm / 216 x 600 mm (in Fax mode) <b>Min:</b> 125 mm x 85 mm (in simplex mode), 125 mm x 110 mm (in duplex mode)
Output Paper Weight	38 - 128 gsm, In Duplex: 50 - 128 gsm
Feeding Speed	<b>BW / Colour:</b> Simplex 45 sheets/min, Duplex 27 sheets/min

### Finisher-AB1 (Optional)

Paper Size / Paper Weight	<b>Max:</b> A4/Legal 8.5 x 14" (216 x 356 mm) <b>Min:</b> Postcard 3.5 x 5" (88.9 x 127 mm) <b>Weight:</b> 60 - 216 gsm
Stacker Capacity	<b>[Without Staples]:</b> 1,000 sheets, Mixed Size Stacking: 300 sheets (at 80 gsm) <b>[With Staples]:</b> 50 stapled sheets or 750 sheets
Staple	
Capacity	A4/Letter: 50 sheets (Max 90 gsm)
Paper Size	<b>Max:</b> A4/Legal 8.5 x 14" (216 x 356 mm) <b>Min:</b> B5
Position	Single (Front / Angled Staple)

### Customer Expectation Document (CED)

For detailed product specifications, optimum performance parameters and service clearances refer to the Customer Expectation Document.



**Reproduction Prohibitions** Please note that reproduction of the following is prohibited by law: Domestic and overseas bank notes and coins, government-issued securities, national bonds and local bond certificates. Unused postage stamps and post cards. Certificate stamps stipulated by law. The reproduction of works for copyright purposes (literary works, musical works, paintings, engravings, maps, cinematographic works, photographic works, etc.) is prohibited except when they are reproduced personally, at home or within limited range according to the above. This product is equipped with an anti-counterfeit feature. This feature is not intended to prevent illegal reproduction. Be extremely careful about the management of equipment used.



#### For Your Safe Use

Before using the product, read the Instruction Manual carefully for proper use. Use the product with an appropriate adequate power source and voltage displayed. Be sure to establish a ground. In the case of a failure or short circuit, an electric shock may result.

For more information or detailed product specifications, call or visit us at

**Fuji Xerox Australia** 101 Waterloo Road,  
Macquarie Park NSW 2113  
Tel. (02) 9856 5000 Fax. (02) 9856 5003

[www.fujixerox.com.au](http://www.fujixerox.com.au)

