



# COMPACT AND FLEXIBLE FOR BUSY WORKGROUPS

**CANON IMAGE FORMULA DR-C240**

An ultra-compact and powerful desktop scanner featuring a robust design and reliable paper handling for capturing multiple document sizes and formats, including passports.

**Canon**

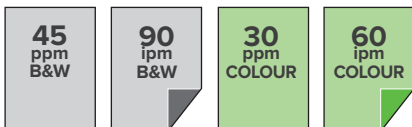
*No one does it  
like you*

# COMPACT DESIGN, POWERFUL FEATURES

The imageFORMULA DR-C240 is an ultra-compact and powerful desktop scanner featuring a robust design and reliable paper handling for capturing multiple document sizes and formats, including passports.

## Benefits

- Boost productivity with fast 2-sided scanning at up to 90ipm
- Easily scan various types of documents including passports with one compact device
- Enjoy peace of mind with supreme paper-handling reliability and durable construction
- Enhance your environment with quiet operation, compact build and elegant design
- 6mm document height (up to 60 pages) ADF
- 4000 scans/day



(A4, 200 dpi)

## Designed in response to customers' needs

The imageFORMULA DR-C240's robust construction and rugged document feeder were developed as a direct result of customer feedback. It represents a step forward in build quality in this scanner's segment, effortlessly capturing up to 4,000 scans per day. Your productivity is maximised by the 6mm document height (up to 60 pages) ADF that reliably feeds batches of mixed-sized document and media types: from passports and plastic cards to duplex A4, A3 (using folio) and long documents up to 3m in length.

## Precision paper handling

To keep your workflows fluid, the imageFORMULA DR-C240 offers a powerful, high-quality feeding mechanism that ensures best in class reliability for scanning various documents, including ultra-thin papers from 27gsm. The ultrasonic Double Feed Detection and Double Feed Release (DFR) function allow scanning to restart quickly, keeping downtime to a minimum.

## High-performance and flexible applications

The imageFORMULA DR-C240's premium build quality and productivity-focused features are a breakthrough in this value segment. Offering rapid scanning at up to 45ppm/90ipm, the imageFORMULA DR-C240 is the natural all-round choice for office departments and workgroups. Its quiet operation – and compact, attractive desktop design – make a great impression in front offices and customer service points, for example in banks, hotels, hospitals and government offices.

## Easy operation

The imageFORMULA DR-C240 includes a wide range of high quality image processing capabilities. These include automatic page size and text direction detection, text enhancement, a deskew function and automatic colour detection. The user-friendly control panel lets operators scan with a press of a button – accelerating and simplifying scanning tasks.

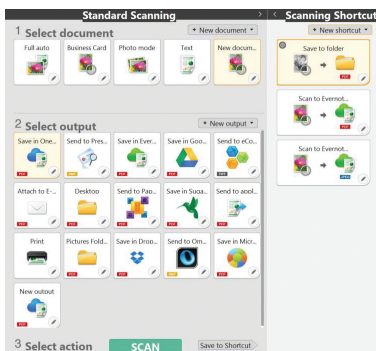
# RICH SOFTWARE BUNDLE



## Capture OnTouch

### Intuitive scanning

With Canon's CaptureOnTouch user-friendly interface you can easily scan paper documents into digital archives and save or send them to multiple destinations, including cloud services. It incorporates a Full Auto Mode function that delivers a simplified scanning operation with high quality results. You can create searchable PDF files using its built-in OCR technology and saved frequently performed operations into the shortcuts menu.



## Capture Perfect

### Advanced scanner control

Canon's CapturePerfect is a scanning application allowing you to fully utilise all of the powerful capabilities of imageFORMULA scanners. It enables efficient batch scanning and supports Kofax VRS driver for enhanced image quality. Advanced processing features include automatic batch separation, zonal OCR (Optical Character Recognition), great range of document viewing options and flexible 'scanning to' options.



### Kofax VRS driver for enriched image quality

Kofax VRS helps you achieve excellent image quality every time. It makes scanning simpler and easier thanks to automatic image processing and document handling. Its industry-leading imaging quality improves readability and raises OCR recognition rates, so fewer re-scans are required. As a result you save time and money by significantly increasing productivity.



### Powerful PDF control

A powerful, easy-to-use application for viewing, creating, editing and converting PDFs. Nuance eCopy PDF Pro Office offers a complete mark-up, annotation and editing capabilities including creation of filling forms with automatic form field recognition. Full suite of document security and signature tools is included.

# Specifications

Type	Desktop type sheet-fed scanner
Scanning Sensor Unit	CMOS CIS 1 Line Sensor
Optical Resolution	600 dpi
Light Source	RGB LED
Scanning Side	Front / Back / Duplex
Interface	High speed USB 2.0
Dimensions (W x D x H)	Trays Closed: 291 mm x 175 mm x 182 mm (before the pickup tray is set) Trays Opened: 291 mm x 603 mm x 363 mm
Weight	Approx. 3 kg
Power Requirements	AC 100 - 240V (50/60 Hz)
Power Consumption	Operation: 22W max Sleep Mode: 1.7W max Power Switch OFF: 0.5W max
Operating Environment	10 - 32.5 °C Humidity: 20 - 80 % RH
Environmental Compliance	RoHS and ENERGY STAR
Scanning Speed	Black and White: 200dpi: 45ppm (simplex) / 90ipm (duplex) 300dpi: 45ppm (simplex) / 90ipm (duplex) Colour: 200dpi: 30ppm (simplex) / 60ipm (duplex) 300dpi: 20ppm (simplex) / 40ipm (duplex)
Document Size	Plain Paper: Width: 50.8 mm to 216 mm Length: 54 mm to 356 mm (You can scan documents up to 3,000 mm long by setting the scanner to the Long Document Mode) Business Card: 50.8 mm x 85 mm or larger Plastic Card: 53.9 mm x 85.5 mm
Document Thickness	Plain Paper: 27 - 209 g/m <sup>2</sup> (0.06 - 0.25 mm) Business Card: Less than 0.45 mm Plastic Card: 0.76 mm (Embossed Card up to 1.4 mm thick is supported) Passport Scanning: Up to 4 mm thick (via carrier sheet)

Paper Separation	Retard Roller Method
Feeder Capacity	6mm high document stack (up to a maximum of 60 sheets)
Output Resolution	150 x 150 dpi, 200 x 200 dpi, 240 x 240 dpi, 300 x 300 dpi, 400 x 400 dpi, 600 x 600 dpi
Output Mode	Black & White / Error Diffusion / Advanced Text Enhancement, Advanced Text Enhancement II, 8-bit Greyscale (256-Level), 24-bit Colour
Suggested Daily Duty Cycle	Approx. 4000 scans
Special Features	Automatic Page Size Detection, Deskew, 3-Dimensional Colour Correction, Colour Dropout (RGB), Colour Enhancement (RGB), Auto Colour Detection, Shadow Cropping, MultiStream, Adjustable gamma settings, Skip Blank Page, Folio Mode, Scan Area Setting, Batch Separation with white blank sheet or patchcode, Moiré Reduction, Prevent Bleed Through/Remove Background, Contrast Arrangement, Background Smoothing, Shadow Cropping, Auto Resolution Setting, Double Feed Release, Double Feed Detection (Ultrasonic Sensor, Length)
Bundled Software	ISIS / TWAIN Driver (Windows VISTA SP2 / 7 SP1 / 8 / 8.1 / Server 2008 R2 SP1 / Server 2012 R2), CapturePerfect, CaptureOnTouch, eCopy PDF Pro Office, Kofax VRS, Plug-in: EMC Captiva Cloud Runtime Controls
Consumables	Exchange Roller Kit, Carrier sheet (Passport), Carrier Sheet (A4)
Accessories	Flatbed Scanner Unit 101, Flatbed Scanner Unit 201, Barcode Module, 2D Code Module

All data is based on Canon standard testing methods except where indicated. Subject to change without notice.



## Accessories



### Flatbed Scanner Unit 101

Scan bound books, journals and fragile media up to A4 by adding the simple to connect, via USB cable, optional Flatbed Scanner Unit 101. The flatbed unit work seamlessly with the main scanner in a smooth dual-scanning operation that lets you apply the same image-enhancement features to any scan. High-speed, high-resolution (1200 dpi) open scanning is supported by a unique adjustable cover and ambient light control.



### Flatbed Scanner Unit 201

Enjoy a seamless dual scanning operation with Canon Flatbed Scanner Unit 201 attachment to the select Canon imageFORMULA scanners providing greater versatility and precision when scanning books, journals and fragile documents up to A3. This high performance flatbed scanner allows you to scan an A3 media in just 3.5 seconds.



canon.com.au/business  
1800 444 199

*No one does it like you*